

Appendix A – Priority matrix

Matrix scoring process:

<p>Volumes</p> <p>The proportion of all crime</p> <p>0 - Less than 4% of all crime</p> <p>1 - Between 4% and 9% of all crime</p> <p>2 - 10% to 20% of all crime</p> <p>3 - Over 20% of all crime</p>	<p>Public Concern</p> <p>Are the public concerned by the incidence of this crime/incident?</p> <p>0 = Either not in the top ten concerns</p> <p>1 = In the 6 to 10 top concerns</p> <p>2 = In the top 5 public concerns</p>
<p>ASB Experience 2006 figures</p> <p>0 - Less than 4%</p> <p>1 - 5 - 9%</p> <p>2 - 10 - 20%</p> <p>3 Over 20%</p>	<p>Personal Harm</p> <p>What is the typical level of harm inflicted by this type of crime or incident?</p> <p>0 - No Harm</p> <p>1 - Less serious physical and emotional harm</p> <p>2 - Serious physical harm</p> <p>3 - Death</p>
<p>Trends</p> <p>Are there emerging trends of concern? Concern over the trend</p> <p>0 - Significant and sustained reduction in crime</p> <p>1 - Reduction achieved but either small (less than 5% or only achieved in the last year)</p> <p>2 - Increasing over the last period</p> <p>3 - Increased each year since baseline or significant increase (greater than 5%)</p>	<p>Disproportionate impact against sections of the community</p> <p>Disproportionate impact on section of the community: (evidenced or intelligence)?</p> <p>0 - No impact</p> <p>1 - Impact on at least one vulnerable group or section of the community</p> <p>2 - Impact on more than one vulnerable group or section of the community</p>
<p>Benchmarking Concerns</p> <p>Performance against the partnership most similar group</p> <p>0 - Below average rate and no prediction to change</p> <p>1 - Below average but predicted to increase</p> <p>2 - Above average rate</p> <p>3 Significantly above the average or one of the worst three areas in the group</p>	<p>Linked to drug or alcohol misuse</p> <p>0 - No, 1 - Yes, 2 - Strong links or links to both</p> <p>Future issues and PESTELOM</p> <p>Is there anything else within the PESTELOM framework which gives a cause for concern?</p> <p>0 - No</p> <p>1 - Yes</p>

To arrive at the weighted average score, the scores for each of the crime types are added up and then divided by the number of columns with filled in data. This is to account for certain crime types where there may be missing data.

Crime or Incident Type	PROBABILITY		HARM		PROPORTIONALITY		SUB. MISUSE	PREDICTIVE	SCORE		
	Volume	Trends	Benchmarking Concerns	Public Concern	Personal Harm	Disproportionate impact against sections of the community (incl business)			Hidden or under reported crime	Linked to drug or alcohol misuse	Future issues and PESTELOM
Violence Offences	All Violence	3	1	2	2	2	1	0	14	1.6	
	Assault without injury (exc on PC)	1	2	2	1	2	1	0	12	1.3	
	Assault with less serious injury	2	1	3	2	2	1	0	13	1.4	
	Wounding (serious & other)	2	1	3	2	2	1	0	14	1.6	
	Harassment	0	1	0	1	1	1	0	7	0.8	
	Most serious violence (ex GBH without intent)	0	0	0	2	2	1	0	8	0.9	
	Sexual offences	0	0	1	1	2	1	0	8	0.9	
	Robbery (personal)	0	2	2	1	2	1	2	11	1.2	
	Robbery (business crime)	0	0	1	0	2	1	2	6	0.7	
	Serious Acquisitive Crime (Home Office definition)	2	1	1	1	1	0	1	8	0.9	
	Domestic Burglary	1	0	0	2	1	0	1	5	0.6	
	Non Domestic Burglary	1	0	0	0	1	1	1	5	0.6	
	Vehicle Crime (ex interference)	1	2	1	1	0	0	1	6	0.7	
	Theft of a motor vehicle	0	0	0	1	1	0	0	2	0.2	
	Theft from a motor vehicle	1	2	2	2	1	0	1	9	1.0	
Theft (other than a vehicle) and handling stolen goods	3	1	3	0	1	0	1	9	1.0		
Theft from the person	0	2	0	0	1	0	1	4	0.4		
Employee theft	?	?	?	0	1	1	0	2	0.3		
Shop theft	2	1	3	2	0	1	2	12	1.3		
Cycle theft	1	0	3	0	1	0	0	6	0.7		
Theft in a dwelling	0	2	3	1	1	1	0	9	1.0		
Other theft and handling	1	2	0	0	1	0	1	5	0.6		
(All) Fraud	0	0	0	0	1	1	2	5	0.6		
Criminal Damage (total)	2	0	0	1	0	1	1	6	0.7		
Criminal Damage (vehicles)	1	0	0	2	0	1	1	6	0.7		
Criminal Damage (dwellings)	0	0	0	1	0	1	1	4	0.4		
Criminal Damage (other buildings)	0	0	1	0	0	1	1	4	0.4		
Criminal damage (business)	?	?	?	1	0	1	1	4	0.7		
Arson (police recorded)	0	2	0	0	3	1	0	7	0.8		
Arson [Primary & Secondary] (HFRS)	0	0	N/A	0	2	1	0	4	0.5		
Primary Arsons (HFRS)	0	0	N/A	0	3	1	0	5	0.6		
Secondary Arsons (HFRS)	0	0	N/A	0	1	1	1	4	0.5		
Fear of crime locations:	2008/9	2007									
	Place Survey	56%									
Somerstown	56%	37%									
Buckland	45%	27%									
Paulsgrove	40%	14%									
Guildhall Walk Entertainment Area	35%	15%									
Landport	29%	9%									
Portsea	25%	12%									

Appendix B – Community Tasking Group Priorities for 2010/11

Drayton and Farlington

- ***To provide greater visible presence in the neighbourhood*** – along with increased patrols, officers aim to interact with members of their local communities through street briefings and beat surgeries.
- ***To reduce anti - social behaviour in Lindisfarne Close*** – the team will be concentrating their efforts on reducing problems in Lindisfarne Close, following a spate of incidents involving youths playing football in the close, despite Housing Authority regulations prohibiting football.
- ***To reduce the anti social use of motor vehicles including speeding*** – Complaints have been received from residents who are reporting people using excessive speed in the Drayton and Farlington area.

Cosham

- ***To reduce ASB (including inconsiderate cycling)*** – The team will be focussing efforts on Cosham High Street where the problems are most prevalent. Operation Dismount has been continued in the High Street with very positive responses from the public.
- ***To reduce to the anti social use of vehicles*** – With particular focus on speeding within the Cosham area.
- ***To tackle alcohol related ASB in Cosham High Street*** – Councillors have advised that residents, shoppers and traders have expressed concerned about the number of incidents involving drunk people sleeping on benches and urinating in the High Street.

Paulsgrove

- ***To reduce antisocial behaviour related to underage drinking and drug use*** – The team will be focussing their efforts on Allaway Avenue Shopping Parade, Lime Grove and Hillsley Rd.
- ***To tackle Speeding Motorists*** – focus will be on Allaway Avenue and Port Way, where problems are more prevalent.
- ***To tackle anti social behaviour at Allaway Avenue Shopping Parade*** – It has come to the team's attention that ASB and youth nuisance at the shops has increased, and that the area requires focussed attention to tackle the issue swiftly

Nelson

- ***Old Commercial Rd – Cycling and Parking Issues*** – Following consultation with community groups, the issue of parking and cycling in the Old commercial Rd area has been raised as a community priority. There are often reports of double parking at the Mosque and surrounding Rds and the community have complained of cycling on pavements

Hilsea

- ***To reduce youth nuisance and antisocial behaviour*** – the team are working to reduce antisocial behaviour across the beat. However, they will be paying special attention to Widley Rd, Jervis Rd, Alexandra Park, North End Avenue, Mountbatten Centre, Stamshaw Park and surrounding areas, where problems are more prevalent.

Copnor and North End

- **None currently identified**

Kingston

- ***To tackle cycling on pavements*** – Complaints from members of the public have been received advising that people riding pedal cycles on the pavements and without lights are causing the residents of George Street concern. They have asked the teams to tackle this issue.

Baffins

- ***Tackle ASB and youth nuisance in Tangiers Rd*** – there have been numerous reports of antisocial behaviour by youths who have been congregating in parks and are causing damage to property. Operation Born will be targeting the area on Friday and Saturday night patrols when problems are most prevalent. Police are investigating the issues in order to establish the extent and potentially identify offenders. Patrol strategy is in place.

Charles Dickens East

- ***Sydenham Court, Berkshire Close*** – Homeless people have been getting into the blocks to sleep at night which is causing alarm to the elderly residents. Reassurance visits and swift action

by removing rough sleepers is being taken, as well as outreach by Central Point and work with residents to offer Crime Prevention Advice

Charles Dickens West

- **Vehicle Crime – Beat wide** – The team will be targeting the increasing car crime in the Charles Dickens beat using Force Support Unit patrols, ABCs/ASBOs, intelligence from the community, warden patrols and Police Patrols.

St Thomas

- **Tomb-stoning – Camber Docks** – In preparation for anticipated issues at the Camber Docks this summer, tomb-stoning has been added as a priority at the Community TCG meetings. This area will be closely patrolled by partners and swift action will be taken with any individuals known to be participating in this dangerous activity
- **St James Rd/Dunsmore Close** – Recently youth nuisance in the area has become more prevalent. Wardens are regularly coming across youths blocking the Rd, kicking footballs at cars and being abusive towards residents

City Centre

- **Prevent and detect all retail related crime within the City Centre and Gunwharf Quays** - The team will respond and deal with all retail related crime, including shoplifting, employee theft, deceptions, purse thefts, frauds and handling stolen goods
- **Prevent and detect all pedal cycle related crime within the City Centre and Gunwharf Quays** - The team will continue to promote our free pedal cycle security marking events whilst also educating those who cycle on the Commercial Rd precinct
- **Respond robustly to all reports of begging, anti social behaviour and graffiti within the City Centre and Gunwharf Quays** - The team are using a disruption technique (borrowed from our colleagues in the Chichester City Centre Unit) whereby all beggars will be summonsed for the offences and their monies seized.

St Jude

- **To tackle vehicle crime in St Jude** - There has been a considerable increase in Theft From Motor Vehicle (TFMV) offences in St Jude's. Offences are notably highest on a Sunday and also peak during the daytime. The team will be working to reduce this through increased patrols, identifying potential offenders and using finger print analysis to secure identification

Central Southsea

- **To reduce drug and alcohol related anti-social behaviour** – the team are working to reduce anti-social behaviour across the beat. However, they will be paying special attention to Albert Rd, Victoria Rd, Fawcett Rd and Francis Avenue, where problems are more prevalent.
- **To reduce to number of student related ASB and noise related complaints** – This will be done by maintaining regular contact with the University of Portsmouth Liaison officers, Police and Environmental and Public Protection Service (EPPS) teams. EPPS now have new protocols in dealing with student related noise complaints which will be pivotal in dealing with such complaints.

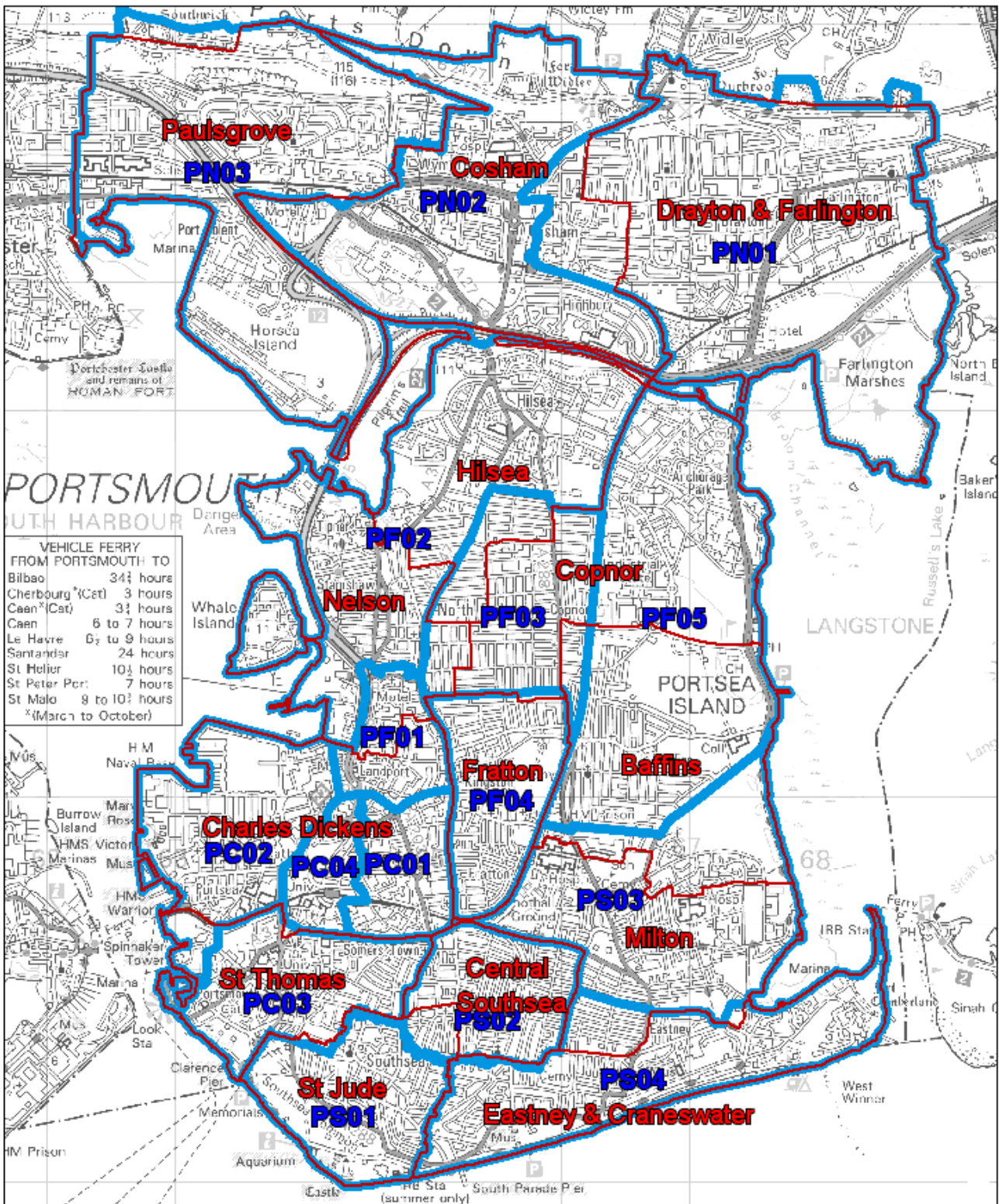
Milton

- **To reduce the impact of Neighbour Disputes** – By gleaning information from various sources, this has been identified as something residents of Milton are concerned about. The team will be working to mediate between residents with the aim of reducing the number and impact of neighbour disputes on those involved and those who are affected by it on a wider level
- **To reduce theft from motor vehicle offences** – There has been a recent rise in occurrences of theft from motor vehicle in the Milton area

Eastney

- **To reduce the impact of Neighbour Disputes** – By gleaning information from various sources, this has been identified as something residents of Milton are concerned about. The team will be working to mediate between residents with the aim of reducing the number and impact of neighbour disputes on those involved and those who are affected by it on a wider level.
- **To tackle Rd traffic offences including speeding in the Eastney area** – The team will be working with the Rds Policing Unit to carry out a number of speeding operations in order to identify and educate those who are caught speeding.
- **To reduce theft from motor vehicle offences** – There has been a recent rise in occurrences of theft from motor vehicle in the Eastney.

Appendix C - Map of Portsmouth's political ward and police beat boundaries.



Map of Portsmouth showing council ward boundaries in red and police beat boundaries in blue

(This copy has been produced specifically to supply an individual with authority information. No further copies may be made)



Based on or reproduced from Ordnance Survey 1:1250 Base Map with the permission of HMSO © Crown copyright reserved. Unauthorised reproduction infringes Crown copyright and may lead to prosecution or civil proceedings. Licence No. 100019671

Appendix D – Police Recorded Crime 2010/11

Category:	Data over time					Trend over time		% of All Crime 21,654	Benchmarking P = Portsmouth rate. Av = average MSG rate. Rank
	1 st April 2006 to 31 st March 2007	1 st April 2007 to 31 st March 2008	1st April 2008 to 31st March 2009	1 st April 2009 to 31 st March 2010	1st April 2010 to 31st March 2011	Current year against previous	Current year against baseline		
All Crime	28,559	25161	24946	22925	21654	-6% -1,271	-24% -6,905		P = 106.4 Av = 96.4 11
All Violent Crime	6,901	6254	5483	5916	5741	-3% -175	-17% -1,160	26.5%	P = 28.2 Av = 23.85 11
Assault without injury (inc on PC)	2,035	1728	1487	1545	1549	0% 4	-24% -486	7.2%	P = 7.6 Av = 6.5 12
Assault with less serious injury	2,113	2135	2189	2604	2479	-5% -125	17% 366	11.4%	P = 12.2 Av = 8.3 13
Serious Wounding	59	46	95	80	62	-23% -18	5% 3	0.3%	P = 0.3 Av = 0.46 6
Other Wounding	2,113	2135	2283	2677	2539	-5% -138	20% 426	11.7%	P = 12.5 Av = 8.7 13
Wounding (serious & other)	2,172	2181	2378	2756	2601	-6% -155	20% 429	12.0%	P = 12.8 Av = 9.1 13
Harassment (due to a change in counting rules, causing public fear, alarm or distress is no longer included)	N/A	N/A	101	166	160	-4% -6		0.7%	P = 0.79 Av = 0.9 5
Other VATP	6,108	5602	4710	5182	5074	-2% -108	-17% -1,034	23.4%	P = 24.9 Av = 20.5 12
VATP with injury				2761	2602	-6% -159		12.0%	P = 12.8 Av = 9.2 13
Most serious violence (ex GBH without intent)	64	53	98	84	63	-25% -21	-2% -1	0.3%	P = 0.6 Av = 0.8 6
Racially or Religiously Aggravated Crime	data not available	319	223	225	196	-13% -29		0.9%	P = 0.96 Av = 0.8 11
Alcohol Related Violence in Associated NTE zones (data from Hants Police Performance Team)	951	840	806	933	865	-7% -68	-9% -86	4.0%	N/A N/A N/A
Robbery (violent crime but also included in the serious acquisitive crime category)	258	227	251	229	246	7% 17	-5% -12	1.1%	P = 1.2 Av = 1.13 11
Personal Robbery	229	191	229	204	228	12% 24	0% -1	1.1%	P = 1.12 Av = 1.06 11
Business Robbery	29	36	22	25	18	-28% -7	-38% -11	0.1%	P = 0.09 Av = 0.08 10
Sexual offences (all)	465	372	330	349	298	-15% -51	-36% -167	1.4%	P = 1.46 Av = 1.37 10
Serious sexual offences	299	251	236	234	209	-11% -25	-30% -90	1.0%	P = 1.027 Av = 1.023 7
Other sexual offences	166	121	94	115	89	-23% -26	-46% -77	0.4%	P = 0.44 Av = 0.35 11
Serious Acquisitive Crime	4859	3731	4025	3071	3052	-1% -19	-37% -1,807	14.1%	P = 15 Av = 14.3 8
Domestic Burglary (incl attempted)	1080	1016	1206	1025	947	-8% -78	-12% -133	4.4%	P = 11 Av = 11.9 8
Non Domestic Burglary	1185	1079	1385	1152	892	-23% -260	-25% -293	4.1%	P = 4.4 Av = 5 8

Appendices – Safer Portsmouth Partnership Strategic Assessment 2010/11

Category:	Data over time					Trend over time		% of All Crime 21,654	Benchmarking P = Portsmouth rate. Av = average MSG rate. Rank
	1 st April 2006 to 31 st March 2007	1 st April 2007 to 31 st March 2008	1 st April 2008 to 31 st March 2009	1 st April 2009 to 31 st March 2010	1 st April 2010 to 31 st March 2011	Current year against previous	Current year against baseline		
Vehicle Crime (inc interference)	3825	2760	2659	1978	2022	2.2% 44	-47% -1,803	9.3%	P = 9.9 Av = 8.8 11
- Vehicle interference	304	272	300	161	163	1% 2	-46% -141	0.8%	P = 0.8 Av = 0.6 12
- Theft of a motor Vehicle (incl aggravated)	843	778	513	362	297	-18% -65	-65% -546	1.4%	P = 1.5 Av = 1.8 5
- Theft from a motor vehicle	2678	1710	1846	1455	1562	7% 107	-42% -1,116	7.2%	P = 7.7 Av = 6.4 12
Robbery	258	227	251	229	246	7% 17	-5% -12	1.1%	P = 1.2 Av = 1.13 11
Theft (other than a vehicle) and handling	7549	7469	7598	7328	7046	-4% -282	-7% -503	32.5%	P = 34.6 Av = 27.5 13
Theft from person	438	358	392	359	369	3% 10	-16% -69	1.7%	P = 1.8 Av = 2.1 7
Theft in a dwelling	N/A	344	286	324	348	7% 24		1.6%	P = 4.1 Av = 3.5 13
Shop Theft	2665	3109	3318	3361	3151	-6% -210	18% 486	14.6%	P = 15.5 Av = 10.1 15
Cycle Theft	1398	1255	1360	1389	1162	-16% -227	-17% -236	5.4%	P = 5.7 Av = 3.2 14
Other theft and handling	N/A	2403	2242	1895	2016	6% 121		9.3%	P = 9.9 Av = 10.6 7
Cheque and credit card fraud	354	184	128	143	85	-41% -58	-76% -269	0.4%	P = 0.4 Av = 0.58 4
Other Fraud and Forgery	636	417	422	468	429	-8% -39	-33% -207	2.0%	P = 2.1 Av = 2.4 8
Criminal Damage (all)	6245	4842	4726	3785	3334	-12% -451	-47% -2,911	15.4%	P = 16.38 Av = 16.3 8
Damage to vehicle	N/A	2173	2373	1729	1481	-14% -248		6.8%	P = 7.3 Av = 7.2 8
Damage to dwellings	N/A	1055	879	811	743	-8% -68		3.4%	P = 3.7 Av = 3.8 8
Damage to other buildings	N/A	712	692	536	467	-13% -69		2.2%	P = 2.3 Av = 1.9 10
Arson (police data)	270	180	166	103	109	6% 6	-60% -161	0.5%	P = 0.54 Av = 0.54 7
Primary arson (HFRS)	N/A	141	158	92	83	-10% -9		0.4%	N/A
Secondary arson (HFRS)	N/A	385	363	231	194	-16% -37		0.9%	N/A

Appendix E – SPP Performance Summary 2010/11

Themes	Indicator Type	INDICATORS	BASELINE 2007/08 (unless otherwise stated)	2008/09	2009/10	Q1 2010/11	Q2 2010/11	Q3 2010/11	TARGET 2010/11 (unless otherwise stated)	PERFORMANCE 2010/11 (unless otherwise stated) RAG rated to 2010/11 target*	Direction of travel (from baseline)	Direction of travel (from last year)	Benchmark performance	
Violence	NI 20 LAA (4.3)	Assaults with less serious injury rate (NI20)	2,000 crimes (10.16 crimes per 1,000 population in 2007/08 based on mid-2008 population estimates)	RED	RED	RED	RED	RED	Only 10.57 crimes per 1,000 population based on mid-2008 population estimates.	12.18 crimes per 1,000 residents (2479 crimes)	Up (BAD) Up 479 crimes (from 2000).	Down (GOOD) Down 125 crimes from 2604.	134/15 CSFs Above average, better than Southampton	
	New indicator 2010/11	Violence against the person (with injury) as measured by Hampshire Constabulary	2,199			AMBER	AMBER	AMBER	Only 2,570	2,602	Up (BAD)	Down (GOOD) Down 159 (from 2781)	134/15 CSFs Above average, better than Southampton	
	NI 25 LAA (4.4)	Specialist support to victims of a serious sexual offence	Hampshire: 445 of which 56 self referrals Portsmouth: 32 of which 39 self referrals (2008/09)		GREEN	RED	RED	RED	To improve on Portsmouth baseline (63 in 2009/10)	109	Up (GOOD)	Down (GOOD) Down 159 (from 2781)	134/15 CSFs Above average, better than Southampton	
	NI 32 LAA (4.5)	Repeat incidents of domestic abuse subject to MARAC	39% (Feb 2008)		GREEN	GREEN	GREEN	GREEN	Not higher than 30%	29.4% (141/480)	Down (GOOD) Down 5.9 percentage points	Absolute number of repeat cases increased, but total number of cases rose		
	SPP 2	Domestic abuse crimes resulting in arrest	45.81% resulting in 832 arrests (08/09)		GREEN	GREEN	GREEN	GREEN	Higher than 90%	Approx 83.6% (1bc)	Up (GOOD)	Up (GOOD)		
	SPP 3	Domestic abuse convictions	NA						Not available					
	SPP 4	Alcohol related violence	840 assaults (210 Assaults on average per quarter)		RED	RED	GREEN	GREEN	5% reduction on 2008/10 figures (Therefore 665)	865	Up (BAD), only a small increase of 25 incidents (9%)	Down (GOOD) Down 54 incidents, 16% drop.		
	LAA (6.4)	% individuals contacted by Racial Awareness Service who take up service	16%		RED	RED	RED	RED	At least 31%	26%	Up (GOOD) Up 12 percentage points from 18%	Up (GOOD)		
	NI 17 LAA (4.2)	Perceptions of anti-social behaviour	27.2% (Place Survey 2008)		GREEN	GREEN	GREEN	GREEN	Not available. Place Survey stopped.					Rate per population better than Southampton, slightly above Hampshire average
	NI 33 (formerly) LAA (4.6)	Number of deliberate primary and secondary fires.	533 (revised)		GREEN	GREEN	GREEN	GREEN	Only 584	277	Down (GOOD) Down by two thirds	Down (GOOD) Down 54 incidents, 16% drop.		
NI 21 LAA (4.8)	Dealing with local concerns about ASB and crime issues by the local council and police	22.8% (Place Survey 2008)		GREEN	GREEN	GREEN	GREEN	Not available. Place Survey stopped.					20/15 CSFs, Average rate, better than Southampton	
SPP 7	Criminal damage	4,843		GREEN	GREEN	GREEN	GREEN	Only 3,540	3,334	Down (GOOD) Down 1509	Down (GOOD) Down 451 from 3785			
NTA 140 NI 40	Increase the number of people effectively engaging in drug treatment (PDU, YTD measure)	613		GREEN	GREEN	GREEN	GREEN	558 (April to October 2010/11) [Jan-Dec 2010 = 676]	608	Up (GOOD)	Up (GOOD)			
New indicator 2010/11	Increase the number of adults accessing alcohol treatment (Tier 3&4 - NDTMS)			GREEN	GREEN	GREEN	GREEN	At least 667	661	Up (GOOD)	Up (GOOD)	Portsmouth has a higher rate per population than Southampton, Hants & Brighton and Hove.		
NI 39 LAA (7.1)	Rate of alcohol related hospital admissions population (per 100,000 population)	17.94 (provisional 07/08)		RED	RED	RED	RED	1353 per 100,000 people (Q3 2010/11)	1535 per 100,000 people (Q3 2010/11)	Up (BAD)	Up (BAD), but only a small increase compared to national increase	Despite higher rate than Eng (14.0), SE (10.88), Sthn (12.62) and Btonshove (14.89), only 1% up on last year in Portsmouth but 8% for Eng & SE, 16% Sthn & 6% Btonshove		

Themes	Indicator Type	INDICATORS	BASELINE 2007/08 (unless otherwise stated)	2008/09	2009/10	Q1 2010/11	Q2 2010/11	Q3 2010/11	TARGET 2010/11 (unless otherwise stated)	PERFORMANCE 2010/11 (unless otherwise stated) RAG rated to 2010/11 target*	Direction of travel (from baseline)	Direction of travel (from last year)	Benchmark performance	
Young People	NI 19 SPP	Proven rate of re-offending	17.6 (2006 baseline)	GREEN	GREEN	GREEN	RED	RED	Only 117 per 100 offenders (Q3 2010/11)	142.9 offences per 100 offenders (200 offences, from cohort of 140 offenders) (Q3 2010/11)	Up by 8.46 per 100 offenders. (BAD)	Up 51.5 per 100 offenders (56%). Total offenders are up, but less offenders.	Above Wessex & Hampshire areas (119 & 114 respectively), but below Southampton (171)	
	NI 111 LAA (10.3)	Number of first time entrants to the Youth Justice System aged 10-17 per 100,000	2,130 per 100,000 population (n=95)	GREEN	GREEN	GREEN	GREEN	GREEN	Only 2,000 per 100,000 population aged 10-17 (approx n=343)	753 per 100,000 population aged 10-17 (n=28)	(GOOD) Down two thirds, in both rate and absolute numbers (287)	(GOOD) Down 1089 rate per 100,000 pop'n and 188 young people.	Below Wessex & Hampshire areas (867 & 815), well below Southampton (914) and IOW (1310)	
	NI 115 LAA (10.10)	Substance misuse by young people. Young people reporting either frequent misuse of drugs/volatile substances or alcohol, or both.	14.2% (2008/9 Tellus 3 Survey)	GREEN	GREEN	GREEN	GREEN	GREEN	Only 12.8%	Not available. Tellus Survey stopped				
	SPP 5	Substance misuse by young people. b) have never taken drugs	71% (2007 Tellus 2 survey)	GREEN	GREEN	GREEN	GREEN	GREEN	N/A	Not available. Tellus Survey stopped				
	NI 16 LAA (4.1)	Serious acquisitive crime rate	3731 (19 crimes per 1,000 population in 2007/08 based on mid-2006 population estimates)	RED	GREEN	GREEN	GREEN	GREEN	Only 17.95 crimes per 1,000 based on mid-2009 population estimates. This is a 2.02% reduction, equivalent to a 5.3% reduction over 3 years	15 crimes per 1,000 (3,052 crimes)	(GOOD) Down 679 crimes, equiv to 4 crimes per 1000 people	(GOOD) Only down by 19 crimes	86/15 OSPs. Slightly above average rate, better than Southampton	
	NI 16	Adult re-offending rate	Actual 11.81% Predicted 12.6% which is a -6.3% difference (Oct 07-Sep 08)		AMBER	AMBER	AMBER	AMBER	N/A	Actual 13.15% Predicted 12.51% which is a +5% difference (Q2 2010/11)	(BAD) Has gone from being 6% under to 5% over predicted rate	(BAD) Actual rate is now even higher than predicted rate.	Hampshire (-0.8%) and Southampton (-3%) have achieved larger reductions than predicted but IOW (14%) haven't.	
	SPP 6	Reduction in conviction rates of those on IDAP	42.8% 3 out of 7 reoffended						N/A					
	NI 30	Re-offending rate of prolific offenders (PPOs)	74 actual offences compared to 81 predicted (2008/9 cohort)		RED	RED	RED	RED	Predicted level of offending: 98 proven offences (Q3 2010/11)	Actual level of offending: 71 proven offences (Q3 2010/11)	Can't compare directly, but bigger margin between actual & predicted offences	Better than last year - as there were more actual offences than predicted.	Hampshire and IOW have achieved similar reductions, and Southampton achieved almost double	
	NI 38	Drug related (class A) offending	102 actual offences, compared to a predicted rate of 105.5 offences. (Jan-Mar 2008 cohort)		GREEN	GREEN	GREEN	GREEN	Predicted rate of offending only 51.4 (Q3 2010/11)	Actual rate of offending 45.088 (Q3 2010/11)	(GOOD)	(GOOD)	Better than Hampshire (0.96) and much better than Southampton (1.62) but above IOW (0.47)	
	Community Engagement	NI 35	Build resilience to violent extremism	Score of 2 (From a 1-5 scale, where 5 is most effective) (2008/9)					N/A	No longer collected.				

Appendix F – Evening and Late Night Economy Partnership (ELNEP) assaults definition [also known as Night Time Economy (NTE) assaults]

Offences: Assault, Wounding, Assault on Police, Indecent Assault, Rapes, Robbery, Personal.

Offences shown are retrieved from police recorded crime for all roads shown between **2100-0500hrs.**

Streets included in the analysis:

Guildhall Square: Alec Rose Lane, Dorothy Dymond Street, Guildhall Walk, King Henry 1st Street, White Swan Rd, Winston Churchill Avenue

Commercial Rd: Commercial Place, Commercial Rd, Edinburgh Rd, Stanhope Rd

Central Southsea: Albert Grove, Albert Rd, Elm Grove, Highland Rd, Fawcett Rd, Victoria Grove, Victoria Rd North, Victoria Rd South

Portsmouth South: Clarendon Mews, Clarendon Place, Clarendon Rd, Granada Rd, Palmerston Rd, South Parade, South Parade Pier, Osbourne Rd

Gunwharf: Gunwharf Keys, Gunwharf Rd, The Canalside, The Plaza

Fratton: Fratton Rd, Fratton Way, Kingston Crescent, Kingston Rd

Portsmouth North: London Avenue, London Rd

Appendix G - Dispersal Orders April 2010/ March 2011

Area	Time scale	Justification
Camber Dock	01.06.2010 – 01.09.2010	Youths jumping into working dock and tomb stoning
Southsea Seafront	28.05.2010 – 27.09.2010	Street drinking, large groups of youths, ASB, alcohol involved, general rowdiness
Hillsley Road	01.04.2010 – 30.09.2010	Groups of young people congregating, graffiti, noise nuisance, intimidating
Lindisfarne Close	23.07.2010 – 22.01.2011	Groups of drink and drugs, intimidation, general ASB, nuisance
Queen Street	07.05.2010 – 06.11.2010	Groups of young adults congregating being abusive, drinking, threatening members of the public and professional agencies

Appendix H - Recommendations from ASB Victims & Witness Support Review 2011.

Low or nil cost

1. Develop formal operating procedure between the ASB Unit and Community Wardens.
2. Develop a procedure for the issuing and monitoring of Incident Log Books.
3. Generic risk assessment form to be used by all agencies at point of referral.
4. Develop case closure procedures.
5. Victim Support to review current correspondence and literature that is sent to victims and witnesses of ASB.
6. Produce partnership ASB leaflet detailing contacts.
7. Update Safer Portsmouth Partnership and Portsmouth City Council websites.
8. Produce call handling procedure for front line call handlers.
9. Additions to job descriptions to include support role.
10. ASB resident focus groups.
11. City Helpdesk ASB questions to be reviewed.
12. Review policies and procedures in relation to victims and witnesses.
13. Identify Victim Champion figurehead.
14. Purchase of digital voice recorders.

Medium cost

15. To recruit volunteers from the University of Portsmouth to support victims and witnesses.
16. Develop ASB training package with Victim Support.
17. Develop publicity campaign to raise awareness for victims and witnesses who own their own home or privately rent.
18. Develop Anti-Social Behaviour Resident Champions across the City.
19. 'Gold Standard' – An advanced service for those cases identified as a higher risk cases (ASB4).

Higher cost options

20. Employ a victim champion to lead on victim and witness approaches.
21. Out of hours support line.
22. To be able to refer high risk ASB cases to the Anti-Social Behaviour Project at Victim Support.